



caracole

2014 annual report

staff

Administration

Executive Director
Linda Seiter

Chief Financial Officer
Peggy Scherer

Client Services Director
Midge Hines, LISW-S

Development Director
Ellie Singleton

Government Grants Manager
Jen Ridenour

Finance Coordinator
Daniel Leesman

Community Investment Coordinator
Megan Green

Office Manager
Dean Clevenger

Client Services Staff

Housing Services Manager
Suzanne Moore

Clinical Supervisors
Brent Hartke, LISW-S
Chrissy Rademacher LISW-S
Ceilia White, LISW-S

Transitional Housing Manager
Bob Keck, LCDC II

Case Managers
Anne Balsley, LSW
Becky Brown, LSW
Valerie Costello, LSW
Rob Goeller, LSW
John Guagenti, MeD, LSW
Jon Hargett, LISW-S
Phyllis Hayden, LSW
Rochell Kuhlman, LISW
Mary Kulakoski-Hoerr, LISW-S
April Martin, MSW, LSW
Mandy McNeely, LSW
Cassie Peluso, LSW
Michael Volmer, LSW
Carolyn Yorio, LSW
Sophia Zapf, MSW, LSW
Megan Zarnitz, MSW, LSW

Case Aide & Intake Support
Jeff Schlabach, MA

Case Aide
Katie Carman

Housing Specialists
Shaan Husain
Lydia Mahaney
Vivian Watkins

Senior Resident Assistant
Patty Davis

Resident Assistants
Bill Cannon
Jim Fiorelli
Danielle Knox
Te'Cole Rasheed
Sandy Reed
Sarah Ridder
Emanuel Sargent

Housing Inspector
Paul Groneck

Interns
Samantha Courteau
Megan Gerber
Emanuel Sargent
Genevieve Sofranec
Allie Weiss

Beagle
Sally Crankshaw

board of directors

President
Rick Kay

Vice President
Stephen J. Peterson

Secretary
Ron Clemons

Treasurer
Shannon King

Board Members
Jay Brock
Ina Broeman
Wendy Carpenter
Jeff Caywood
Don Clowe
Kathy Comisar
James P. Conway, Jr.
Danny Cox
Christopher Deabler
Judith Feinberg, MD
Scott Getz
John R. Gillespie
Sean J. Guilfoile

Kelli Halter
Jim Kelly
Jason Leo
Frank McWilliams, MD
Ryan L. Messer
Neal Morris
Joseph Previte, MD
Peter C. Quinnan
B. Keith Blevins-Roberts
Digi France Schueler
Kent Shaw
Michelle Watts, Ph.D.
David W. Weaver

dear friends,

As our 27th year of service ends, unfortunately, our services are needed now more than ever. In 2014, we saw the trends of younger people seeking services, growing poverty, lack of employment opportunities, difficulties in accessing health care and affordable, stable housing as challenges for those we serve. We also saw a record number of individuals living with HIV/AIDS seeking services – our case managers **provided services for more than 1,500 people** living in the eight-county region of southwest Ohio.

Fortunately, Caracole is in a strong position to meet the growing challenges faced by our clients. We have remained committed to looking to the future and meeting emerging needs. We have successfully transitioned from a small housing provider to a comprehensive AIDS service organization providing quality, outcomes-driven, innovative services. A few of our accomplishments in 2014 include:

- We reorganized our transitional housing programs and melded two programs into one with a substance abuse focus
- Due to the expansion of our grant from the Ohio Department of Health, we now have a total of 16 case managers and three clinical supervisors on staff
- We started mail-order pharmacy services which include co-pay assistance for those who select to enroll
- Our tenant-based housing program has increased its capacity by over 30%
- We advocated and worked with our colleagues to initiate the Cincinnati Syringe Exchange Program and have strived to call attention to the growing heroin epidemic in our community
- Caracole staff have joined a coalition of agencies examining best practices to eliminate homelessness among LGBTQ youth
- We planned and implemented our first 5K for AIDS, a large scale community event in Greater Cincinnati where individuals and corporations could publicly show their support for those living with and affected by HIV/AIDS

Caracole has a rich history of continually assessing the needs of those living with HIV/AIDS and addressing gaps in services. As we look ahead, we are excited about expanding our pharmacy services which will reduce the burden of medication co-pays for our clients, positioning our programs so that those infected through intravenous drug use will engage in care and developing strategies to connect new people testing positive for HIV to services.

The services offered 20 years ago were vastly different than those of today. In the near future, the strategies that may be employed to support those living with HIV/AIDS may be very different from what is needed now. As an organization, Caracole is committed to the growth and change necessary to stay relevant for those we serve and be the expanding, changing, safe space that our name implies.

Thank you for being part of the journey.



A handwritten signature in blue ink that reads "Rick Kay".

Rick Kay

*President,
Board of Directors*



A handwritten signature in blue ink that reads "Linda Seiter".

Linda Seiter

Executive Director

HIV/AIDS

What is HIV/AIDS?

HIV stands for Human Immunodeficiency Virus. HIV attacks and destroys the infection-fighting CD4 cells of the immune system. Loss of CD4 cells makes it difficult for the immune system to fight infections. The CD4 count of a healthy person ranges from 500 to 1,200 cells/mm³. AIDS stands for Acquired Immunodeficiency Syndrome. AIDS is the most advanced stage of HIV infection.

How is HIV transmitted?

HIV is transmitted (spread) from one person to another through specific body fluids—blood, semen, genital fluids and breast milk. Having unprotected sex or sharing needles with a person infected by HIV are the most common ways HIV is transmitted. You can't get HIV by shaking hands, hugging or closed-mouth kissing with a person who has HIV. And HIV is not spread through objects such as toilet seats, doorknobs, dishes or drinking glasses used by a person with HIV.

Although it takes many years for symptoms of HIV to develop, a person infected with HIV can spread the disease at any stage of HIV infection. Detecting HIV during the earliest stages of infection and starting treatment well before symptoms of HIV develop can help people with HIV stay healthy. Treatment can also reduce the risk of HIV transmission.

What is the treatment for HIV?

Antiretroviral therapy (ART) is the recommended treatment for HIV infection. ART involves taking a combination (regimen) of three or more anti-HIV medications daily. ART prevents HIV from multiplying and destroying infection-fighting CD4 cells. This helps the body fight off life-threatening infections and cancers. Although antiretroviral medications can't cure HIV, people with HIV are enjoying healthy lives and living longer thanks to ART.

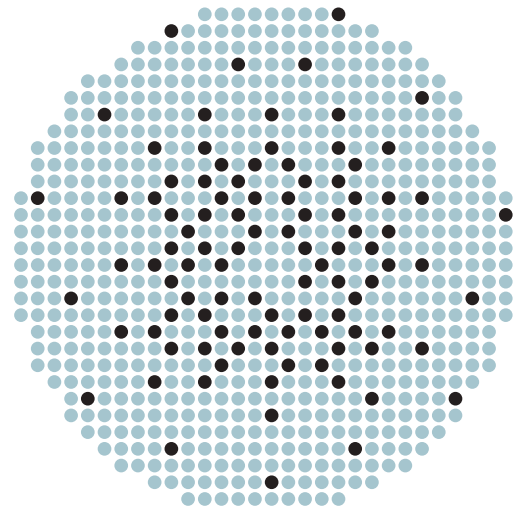
"Caracole has been at the forefront of Cincinnati's response to HIV/AIDS – both in housing and supportive services. This organization is vital to our community and to our compassionate support of those living with HIV/AIDS. Macy's is proud to be counted among Caracole's supporters."

-Jim Sluzewski, SVP of Corporate Communications and External Affairs, Macy's, Inc.

national awareness

- More than 1 million people are living with HIV in the U.S. 1-in-7 of those people is unaware of their infection—approximately 20,400 people in the U.S.²
- About 1-in-4 new HIV infections is among youth between the ages of 13 and 24. Most of them do not know they is infected, are not getting treated and are unknowingly passing the virus to others.²
- 90% of new HIV infections in the U.S. come from people not in care for the disease.¹
- Besides being more likely to transmit the disease, people living with HIV who are not receiving care also have starkly higher rates of AIDS diagnosis and mortality.¹
- Nearly one third of new HIV infections are from people who do not know they are infected.¹
- Gay and bisexual men of all races are the most severely affected by HIV across the U.S.²

1. HIV Surveillance Report, Centers for Disease Control and Prevention (CDC)
2. U.S. Department of Health & Human Services



1-in-7 HIV-positive people are unaware they are infected.²

program information

Caracole's mission is to provide safe, affordable housing and supportive services for individuals and families living with HIV/AIDS.

Founded in 1987, Caracole was the first housing agency in the area for people living with HIV/AIDS. The first unit housed four clients and was essentially a safe haven for individuals with an AIDS diagnosis to be cared for until they passed away. Since that time, the disease and the diagnosis have changed drastically. Caracole now provides direct care services and housing to people with HIV/AIDS and their families along a continuum of care which includes four comprehensive housing programs as well as provides medical case management and pharmacy services to all eligible persons living with HIV/AIDS in the eight-county region. Caracole serves those living in Adams, Brown, Butler, Clermont, Clinton, Hamilton, Highland and Warren Counties in Southwest Ohio.

Caracole House

Caracole House has been offering transitional housing and case management services for homeless, low-income adults living with HIV/AIDS since 1988. The House is a community of two, four-unit apartment buildings that can accommodate up to 16 individuals, each with a private bedroom within a three-bedroom suite. Food, linens and supplies are provided. In addition, an evening meal is prepared for community residents and food is supplied for other meals. Clients at Caracole House receive intensive case management and referral services.

Shelter Plus Care

Shelter Plus Care serves more than 150 clients, caregivers and children, making it Caracole's largest housing program. It is a rent subsidy program offering a permanent housing solution for homeless individuals and families with an adult member living with HIV/AIDS. Caracole provides case management and supportive services to help these individuals and families find and maintain safe housing, stay together and live as independently as possible.

Permanent Supportive Housing

Permanent Supportive Housing is a rent subsidy program that serves HIV+ individuals who are considered by the U.S. Department of Housing and Urban Development (HUD) to be 'unstably housed'. Similar to Shelter Plus Care, in addition to the rental subsidy, clients in our Permanent Supportive Housing program also receive comprehensive case management and referral services.

Short-term Rent, Mortgage and Utility Assistance

Short-term Rent, Mortgage and Utility Assistance (STRMU) is a short-term, needs-based intervention to prevent homelessness and promote housing stability for individuals living with HIV/AIDS in our region. The objective is to assist HIV+ individuals with housing costs and support during HIV-related financial crises.

Medical Case Management

As part of our service-enriched programming, intensive case management services are provided to clients in all of Caracole's programs in order to help limit barriers to accessing care and stabilize and improve health and well-being while empowering clients to become independent and live with HIV/AIDS.

Pharmacy Service

Our pharmacy services are convenient and confidential. Caracole partners with PharmBlue, a mail-order pharmacy that provides HIV and non-HIV medication to enrolled clients with automatic monthly refills and a 24/7 pharmacy help center. Through this service established by the 340B Drug Pricing Program, Caracole is able to offer co-pay assistance to all clients enrolled in our pharmacy service.

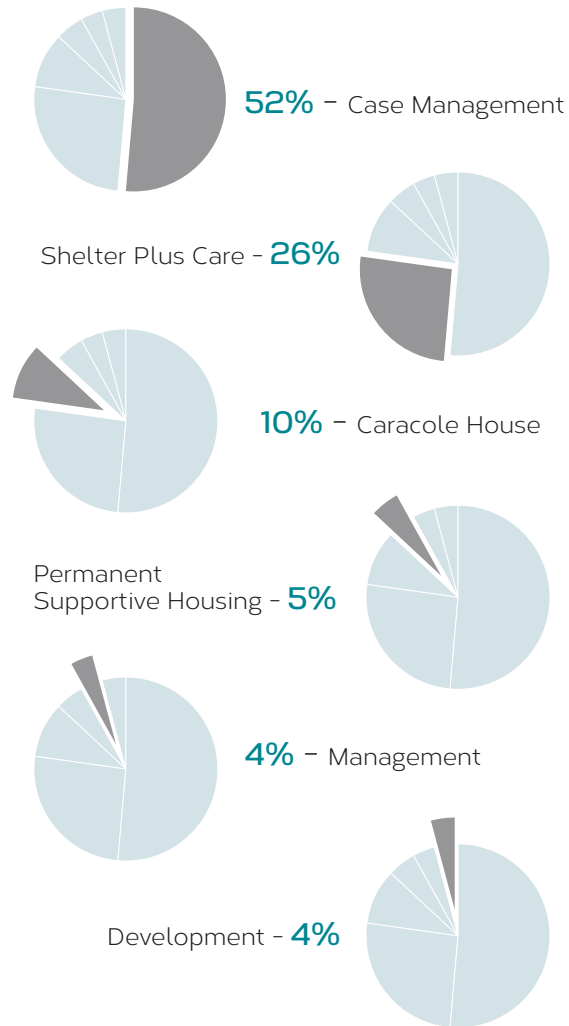
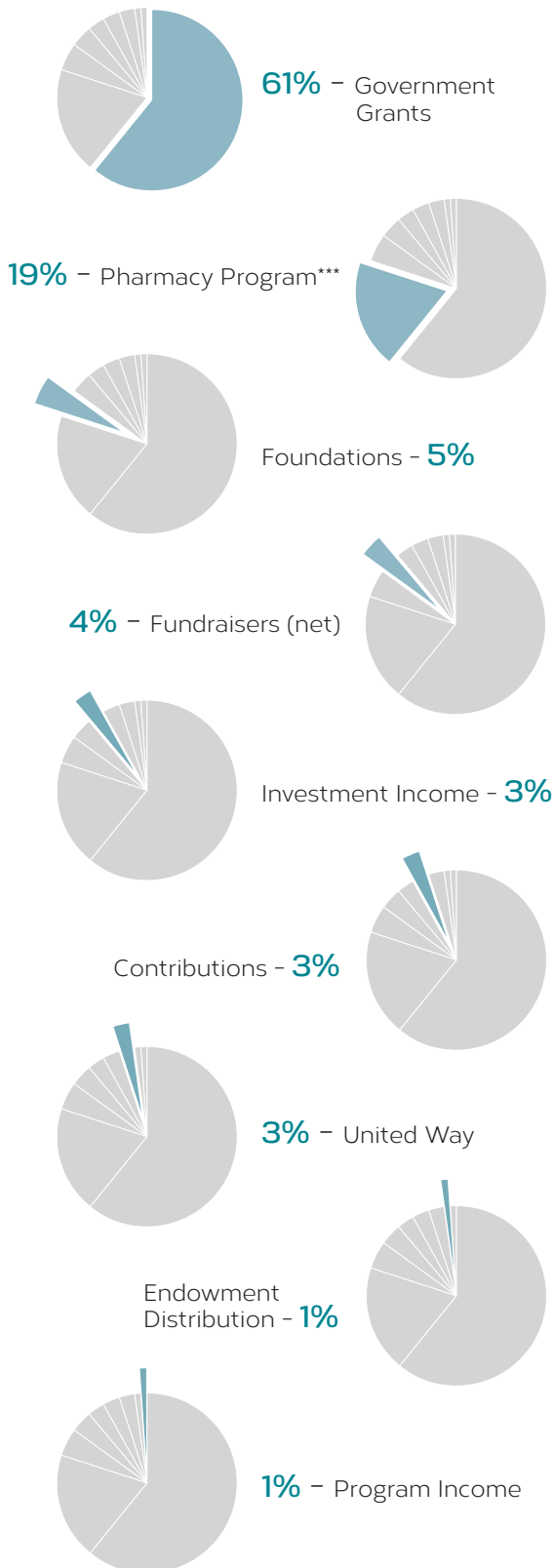
"Caracole is an organization that steps up to help those in need. All of us at Interact for Health are grateful for Caracole's leadership in helping the community cope with the multi-faceted challenges presented by the opioid epidemic. They have been a committed, energetic and thoughtful participant and have willingly stepped up to a leadership role. While we all agree we have more to do, the community would not have made the progress we have made without the support of Caracole."

-James E Schwab, President and CEO Interact for Health

2014 financials in review

Total Revenue - \$3,337,406*

Total Expenses - \$3,239,679*



Net Assets as of 12/31/2014

Unrestricted and Temporarily Restricted.....	\$412,127*
Endowment Fund (Donor-Designated).....	\$11,500*
Endowment Fund (Board-Designated).....	\$962,548*
TOTAL NET ASSETS.....	\$1,386,175*

Percent of expenses for administrative costs.....	8%
Percent of expenses for program costs.....	92%
Net Operating Gain/Loss Before Depreciation.....	\$97,727**
Net Operating Gain/Loss After Depreciation (Estimated).....	\$59,008**

* Unaudited figures for year ending December 31, 2014

** Unrealized gain

*** Pharmacy Program gross amounts; expenses under Case Management include \$429,713 pharmacy costs and \$58,817 co-pay assistance

2014 agency impact



713 clients were able to access **vital medications** with the help of Caracole.



62 of the 62 clients who newly entered Caracole's housing programs increased or maintained their **income** in 2014.



Caracole housed 119 **homeless**, HIV+ clients and their 51 household members in our Shelter Plus Care program.



Caracole provided **transportation** assistance to clients in the form of 2,443 bus passes, bus tokens and gas cards.



68% of Caracole clients (for whom viral load information was available) achieved an **undetectable viral load**.



Caracole provided **case management** to clients in all of our programs at a yearly cost of \$1,777 per person.

"Caracole is one of the longest running members of the Greater Cincinnati Homeless Coalition. We can always count on them to step up when leadership is needed. We trust they will do what they say and we are always confident that every decision Caracole makes comes out of a place of deep passion, respect and love of the many people they empower."
 -Josh Spring, Executive Director Greater Cincinnati Homeless Coalition

Caracole 340B pharmacy services

- 79 clients filled prescriptions via Caracole's pharmacy services in 2014.
- An average of 5 prescriptions were filled per client.
- The cost to clients through this program was \$0.
- Caracole covered \$58,817 in co-pays for these clients in 2014.

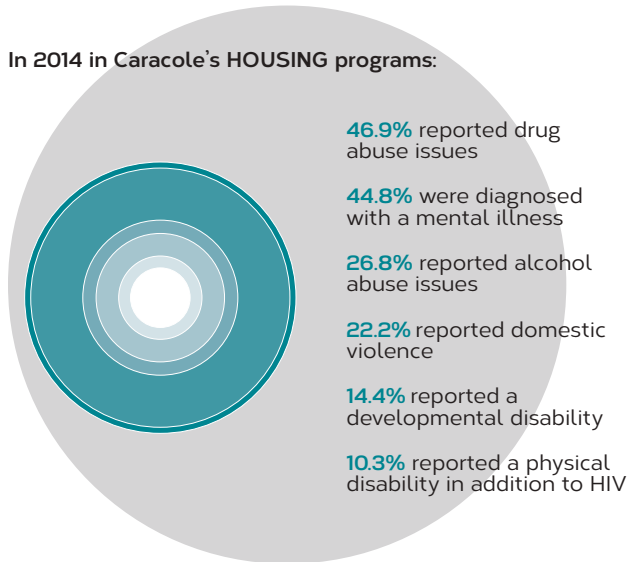
Yearly income of those enrolled in Caracole pharmacy services

No income	12%	<i>Clients in these categories are able to receive assistance from the Ohio HIV Drug Assistance Program (OHDAP), but the State's formulary is limited, and these clients are able to use Caracole's pharmacy to fill scripts not on the State's formulary.</i>
\$2,000-\$15,000	17%	
\$15,001-\$20,000	12%	
\$20,001-\$35,000	32%	
\$35,001-\$50,000	17%	<i>Clients in these categories are not eligible for drug assistance from OHDAP.</i>
\$50,001-\$91,000	9%	

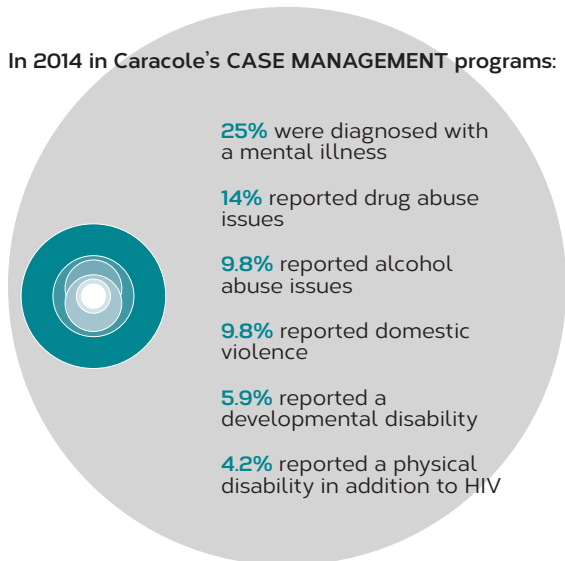
Within the last several years OHDAP has changed the guidelines for eligibility in their drug assistance program - lowering the income eligibility from 500% of the Federal Poverty Level (FPL) to 300% of the FPL.

Client Barriers

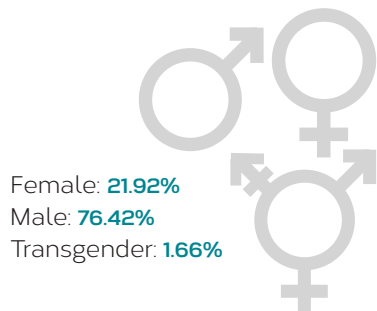
In 2014 in Caracole's HOUSING programs:



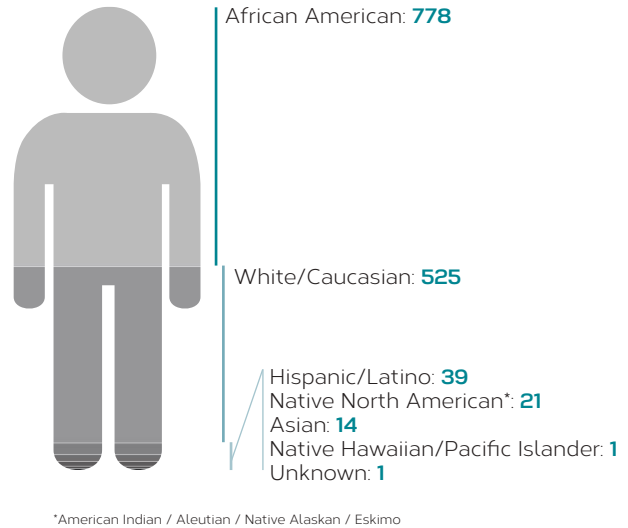
In 2014 in Caracole's CASE MANAGEMENT programs:



Caracole Client's Gender



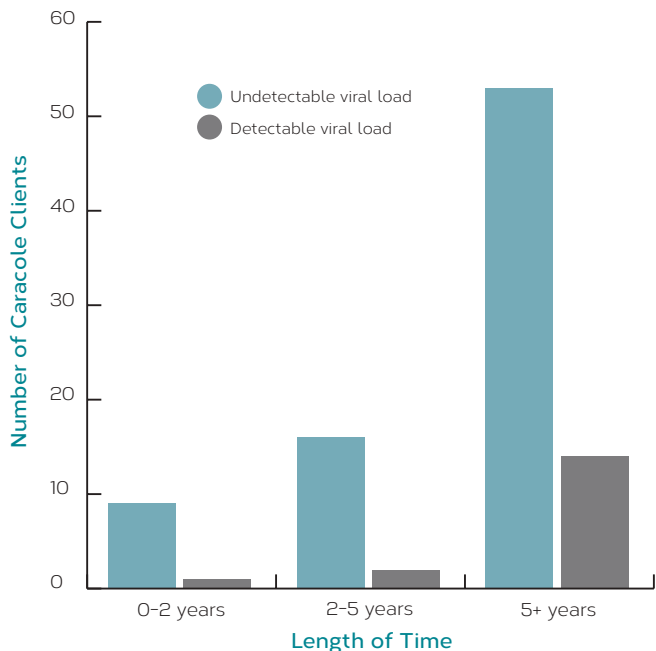
Client Race Breakdown



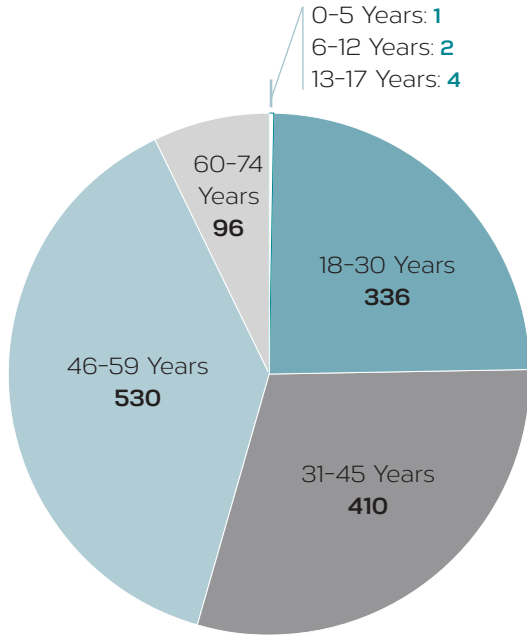
"The outcomes that Caracole achieves as they help people who are struggling with multiple complex issues, homelessness and HIV, are truly remarkable."
-Kevin Finn, President/CEO
Strategies to End Homelessness

Housing is Healthcare

Viral load suppression and length of stay in Caracole's Shelter Plus Care Program



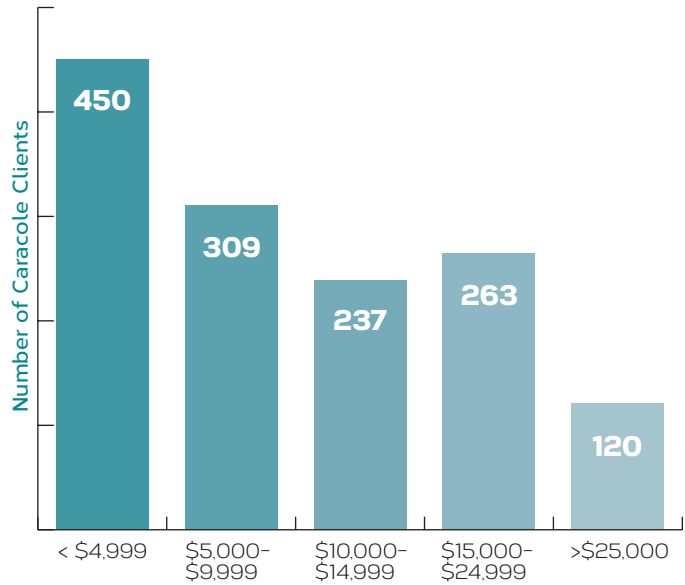
Client Ages Served



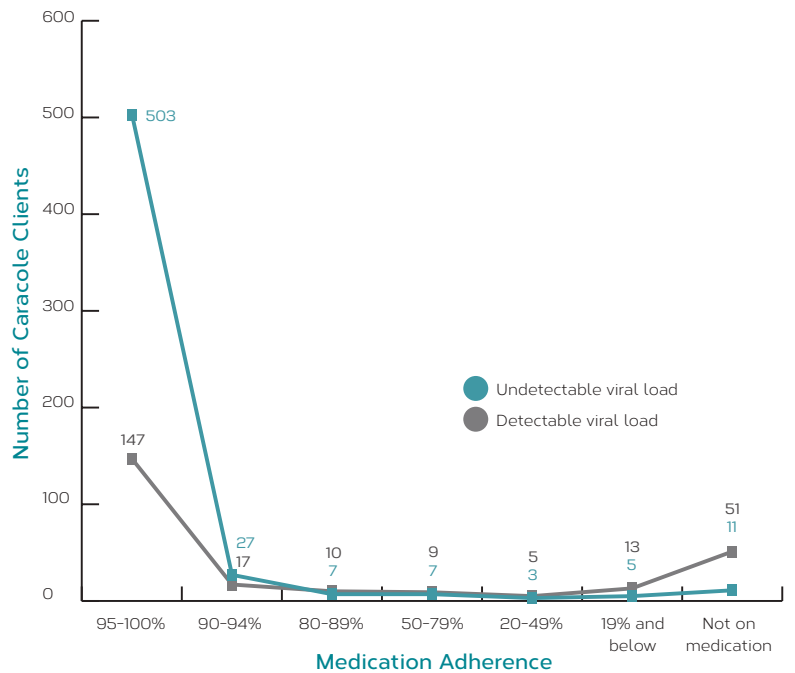
"Caracole makes a tremendous impact on our community every day. They provide counsel, refuge and compassion without judgment to those impacted by HIV/AIDS and their families. The partnership we share is one of compatibility that seamlessly benefits the clients. Only a few select agencies have as much dedication and kindness as the individuals who work and volunteer at Caracole."

-Leslie Mitchell, Vice President, Education, Planned Parenthood Southwest Ohio Region

Yearly Income of Caracole Clients



Viral Load Suppression and Medication Adherence



Client's Reported Infection Source

Infection source	Clients
Blood Products	10
Health Care Worker	7
Hemophilia	2
Heterosexual	482
Injectable Drug User	44
Men Who Have Sex With Men (MSM)	859

Mother to Child	10
MSM Injectable Drug User	2
Sex with Injectable Drug User	9
Sexual Abuse	17
Unknown	1
Women Who Have Sex with Women	4

(clients may be reported in more than one category)



Caracole received **7,020 hours** of generous volunteer support from individuals, corporations and religious institutions. *Thank you!*



Caracole is extremely grateful for all of our donors. This list reflects all donations received between January 1, 2014 and December 31, 2014. If we have inadvertently missed your name, we apologize. Please bring it to our attention and we will correct our error in future publications.

Government Grants (\$7,500+)

City of Cincinnati
Ohio Department of Health
U.S. Department of Housing and Urban Development

Leader Living Circle (\$40,000+)

United Way of Greater Cincinnati

Diamond Living Circle (\$20,000-\$39,999)

M+A-C AIDS Fund
Macy's
William D. Stenger

Platinum Living Circle (\$10,000-\$19,999)

Broadway Cares/Equity Fights AIDS
Procter & Gamble Fund
The Sutphin Family Foundation
The Wohlgemuth Herschede Foundation

Gold Living Circle (\$5,000-\$9,999)

An Anonymous Friend
William P. Anderson Foundation
Christ Church Cathedral
Entertainment AIDS Alliance
Mark Haggard & Dan Brown
Rick Kay & Jim Kelly
Mannequin Boutique
Brett Stover & Christopher Hassall
TJX Foundation
Ginger Warner

Silver Living Circle (\$2,500-\$4,999)

Carol & Stephen Boymel
Don Clowe
Jerry Ershun
Ethicon Endo-Surgery, Inc.
Jonathan C. Garrison & James M. Krumme
David C. Herriman

IS.Q.C.C.B.E.
Ellen & Garrett Jackson
The Kroger Company
Peter Laffoon & John Fowler
Eric D. Lindsey
Macy's Matching Gifts Program
Linda Seiter & Chuck Brown
The Southgate House Revival
Toyota Motor Engineering & Manufacturing
North America, Inc.
Martin & Marilyn Wade
Michael White

Bronze Living Circle (\$1,000-\$2,499)

Arnolds Bar & Grill
Ron Bates & Randy Lasley
Daniel Braunm & Stephen Haas
Ina Broeman
Calvary Episcopal Church
Dwayne Cambra
The Campbell Foundation
Jeff Caywood & Rob Neel
Mary Ellen & Tom Cody
Michael Connley
Kenneth A. Day
Dennis DeClaire
Freeman Durham & Dean Clevenger
Tim Giglio
John & Christine Gillespie
Elizabeth Jackson Glass & Kevin Glass
Goodwin Lighting Services
Kelli Halter & Mark Masters
Kathy Hamm
Midge & John Hines
Suzanne & William Joiner
Richard Kammerer & Tim Cagle
Denny Kidder & Mark Mikulski
Scott Knox & Ray Pater
Levi Strauss Foundation
LPK
Keith Luckett
Bernard McKay & Zack Weber
Joe Mendelsohn III Fund of Greater Cincinnati
Foundation
Eugene & Katerina Minevich
Old Street Saloon
Thomas S. Owen
William A. Parkes
Morry & Pat Passer
Stephen Peterson & Christopher Bolling
Joseph Previte & Andrew Bell
Frank Prudent & Charles W. Jordan
Prudential Matching Gifts Program
Cyril W. Puthoff
Peter C. Quinnan & Mark T. Boire
Catherine & Stephen Rabe
Saundra Reed
Bernard Richard
Richard D. Robertson, Jr. & James Conway, Jr.
Dianne & J. David Rosenberg
Jack & Moe Rouse
Spiros N. Sarakatsannis, Jerry Freed & Alex Smith
Digi & Mike Schueler
Mike Story & Heidi Kloos
Thendara Foundation
Jeff Thomas & Kent Shaw
Treasures 4 Charity Inc
Upstream 360
Maureen & Raymond Whitehead

Benefactor (\$500-\$999)

An Anonymous Friend
Lucy Allen
Melvin Anthony
Linden Ard
Helene & Bruce Ault
Laura & George Babcock
Ellen Harte Baker
Wilford Lloyd Baumes
David C. Beck & Ronald P. Beck

Donald Beck & Lawrence Eynon
Below Zero Lounge
Stephen Blatt, M.D.
Kevin M. Boyle & Douglas S. Kennedy
Paula Braverman
Robert M. Brockman
Robert A. Buster
Bryan Carpenter
Wendy & Scott Carpenter
Elizabeth Clark & Tariq Siddiqi
Virginia Clark
Charles & Jacqueline Collins
Audrey & Charles Comins
Claudia Cosgrove
Crossroads Hospice
Sherri Crowley
Takiyah Cunningham
Michael Dermott & James Chappelle
Chris Edwards
Everybody Rides Metro Foundation
Judith Feinberg
Rob Feltovich
Robert & Susan Feters
Fleming Road United Church of Christ
Peter & Betsy Frame
Connie Freking
GE Foundation
Deborah Gerdes
William Scott Getz
Jon & Mary Gimpel
Green Dog Cafe
Kenneth Griffiths
Lisa Haglund & Steven Slack
Tori Houlihan
Jennifer Huggins
Doug Ignatius & Bruce Preston
Lois & Dick Kay
Shannon & Bradley King
Richard Kroeger & Clarence Heis
Lakeview United Church of Christ
Peter Landgren & Judith Schonbach
John Leopard
Thomas Levack & Sarah Jane Bellamy
D.E. Lewis
Al & Mary Lopez
David Maschinot & Corwrin Johnson
Patricia Messmer & Daniel Goetz
Miller Valentine Walsh Fund
Lawrence Newman
Francie & John Pepper
QCCA, Inc.
Terry Richards
J. Erin Riehl
James Riley
Kathleen & Joshua Sands
Scorpius of Cincinnati
Randall Stastny & Chuck Tabri
Dee & Tom Stegman
Tom+Chee
Sherman Ward, III
Whitmer & Company
Barbara S. Wright
Theodore B. Zeh Jr. Giving Fund

Patron (\$250-\$499)

An Anonymous Friend
Janet & Roger Ach
John & Laurie Acklen
Amgen Foundation
ANAC Association of Nurses in AIDS Care
Gene Barber & Ray Brown
Amanda Beck-Myers
J. Timothy Benton
Patricia Biederman
Dabby Blatt
Brent Bleh
John Boggess
Patricia C. Borne
Mary & Thomas Brennan
Susan Jo Brewer
John Craig Brinkman
Trish & Rick Bryan

"Our congregation has long been supporters of Caracole and many of our Cathedral members have served on the Board. We offer this support because we are committed to innovative housing solutions that are caring and comprehensive. There is no program like Caracole. They wrap the basic services for HIV/AIDS neighbors within an embrace of friendship, care and dignity."

-The Very Reverend Gail Greenwell,
Dean, Christ Church Cathedral

Richard Buchanan
 Dan Burr
 Sue Butler
 Dennis Buttlerwerth
 Joe Cirillo
 Elizabeth Conkin & Bill Gallagher
 Michael & Tucker Coombe
 Danny Cox
 Patty & Tim Crotty
 Christopher & Ionela Deabler
 Donna de Graaf
 Joseph T. Dickow
 Carol & Victor Dipilla
 Vivian Dobur
 David Durkalski
 Joyce Elkus
 Marguerite Fatheree
 Deborah Finlay
 Kelli Fleisch & Karen Permenter
 Gail F. Forberg
 Russell Frese
 Martin Fritzhand
 The Irene Emery Goodale
 Foundation
 Robert Guenther & Mike Dennett
 Jill Guilfoile
 Sean Guilfoile & Daniel Shiveley
 Jon Hargett & William Carson
 Tamara Harkavy & Matt Kotlarczyk
 Jolie Harris & Steve Russell
 Brent Hartke
 Emma D. Hartkemeier
 Thomas C. Harvey
 Elizabeth Hauntz
 J. Thomas Hemmer
 Chris Henry & Kevin Smith
 Ronald Hill
 Timothy Hittle
 Marty & Tom Humes
 Thomas Jackson & Sally Krisell
 Anne & Ted Jaroszewicz
 Thomas & Marie Jenkins
 Matthew Jester
 Kay Johnson & Greg Rouan
 Alan Kastner & Art Hasink
 Thomas Koeninger
 Jerry Lawson & Barb Rinto
 Robert Lee
 Corinne Lehmann & Jon Calderas
 Reverend Brad S. Lutz
 Alan McIntire
 John S. Mengle
 Ryan Messer & James Musuraca-
 Messer
 Danuté Miskinis
 Stephen Moeller & Mike Miller
 Suzanne & Tim Moore
 Janet M. Neumann
 New Mission Baptist Church
 Janet & William Oligee
 James R. Percival & Scott
 Robinson
 Mary Quinn
 Doreen Quinn Trust
 Chrissy & Francisco Rademacher
 Anne Reed & Gifford Blaylock
 Estelle & Lois Riley
 Peggy Scherer
 James & Vivian Schwab
 Dawn & Michael Schwartzman
 Shawn Scott
 Erin Sharp & Gloria Mitch
 Rhonda & Larry Sheakley
 Ellie & Matt Singleton
 Michael P. Skidmore
 Randy Slovin
 Eric Söderlund & Matt Shad
 St. John's United Church of Christ
 Benjamin Stockum
 Terry C. Tracy
 Unwind, Inc
 US Bank
 William E. Walsh, Jr.

Washington Platform, Inc.
 Trish & Ron Weeks
 Sallie Westheimer & Gregory
 Rhodes
 Tom Wetzel & Jim Hellyer
 Chiquita White
 Susan Whitesell
 James & Ronna Willis
 Sandra Ziegler

Sponsor (\$100-\$249)

Anonymous Friends
 Chip Ach
 Marlin Ach
 American Express Company
 Damon Babbage
 John & Martha Babinski
 Anne & Brian Balsley
 Tom & Beverly Barden
 Ian Barrett & Bryant Brazeal
 Sandra Barta
 Cathi & David Bartoe
 Robert D. Beck
 Jerry Bedford, Jr.
 Barbara & Wayne Beimesch
 Andrew & Cynthia Berman
 Philanthropic Fund
 Marianna Bettman
 Dan & Belinda Binford
 Nate Bishop
 Harry Blanton
 James & Elizabeth Bolling
 Steve Bowling
 Gerald & Andrea Breen
 Barbara Brewer
 David L. Briggs
 Kathleen & George Brinkman
 Jay Brock
 Richard Brown
 Jane Felson Brown
 Ronald & Melanie Brubaker
 Tia Brueggemann
 Christy Bryant
 Michael Butler & Dale Murray
 James W. Calhoun
 Edmund Choi & Kieran Daly
 Susan Cline
 Marvin R. Collins & Jay Dean
 Colville
 Kathy Comisar & Larry Flemer
 John Conboy, Jr.
 Tom Conway
 Peter Courlas
 David Crowe
 Barbara A. Culver
 Kathy Davis
 Kenneth & Johnie Davis
 Steven D. Davis
 Harold Delph
 Ellen Dick
 Lara Doremkemper
 Judy Ellis
 Lea D. Eriksen
 Robert Evans
 Keith A. Faber
 Nancy & Rick Fehr
 Kimberly A. Fennell
 Nancy Fields
 Theresa & Mike Flaherty
 Pamela Fletcher & Debra Johnsen
 David Foote
 Dean Forster
 Susan & John Frank
 Donald Fritz
 Daniel Fulkerson
 Nancy Gack
 Bruce Gack
 Gannett Matching Gifts Center
 Lissa Urriquia Gapultos
 Ginny & Dennis Gesenhues
 Jeffrey Gibula
 Mary Godar

Ronald & Cynthia Godby
 Amy Goodwin
 Lynne Meyers Gordon, M.F.A.
 Madeleine Gordon
 Vince Greco
 Barbara Cappel Green
 Kelly & Gary Gries
 John Grim
 Paul Gronck & Steve Hebling
 Jeff Gronck
 Reinaldo Guzman
 Reverend Keith M. Haithcock
 Bruce & Roxanne Hamilton
 Jeanne & Richard Hannan
 Andrew W. Hargis
 Clara Harkavy
 Christine M. Harris
 John L. Harrison
 Dennis & Shirley Hartke
 Bertha & Dennis Helmick
 Jeannine Helmg
 Michelle & Don Hershey
 Kate Hoffmann
 Karen & David Hogue
 Robbin Hoopes
 Doreen Houston
 Chad Houston
 Steven L. Howe
 Howell Avenue Pet Hospital LLC
 HP Company Match
 Mary Ivers
 Michael & Nancy Jamison
 Stephen & Sandra Joffe
 Chip Jones
 Thomas W. Jones, Jr.
 John W. Jones
 Connie Judge
 Lynne & Robert Kanter
 Pamposh & Ajay Kaul
 Michael Kelley
 Joe Kiesler & Bruce Giffin
 Kitchen 452
 Foy Knierim
 Mari Knight
 Allison Knight
 Charles Dean Kurth
 Pasqualina La Cortiglia
 Roger D. Lambert
 Michele Laumer
 Mitchell Leigh
 Marc & Sharyn Levitt
 William Lippert
 LKC Foundation
 Susie & Jack Louiso
 Michael Lowe & Kim Klosterman
 Scott Lundgren
 John & Bobbie MacLeod
 James R. Magee
 Main Bite
 Charlotte Manison
 Sanford Martin
 Gary Matthews & Beverly
 Welbourne
 Mary McCullough-Hudson
 Amy McDuffie
 Elizabeth & Frederick McGavran
 Natalie McIver
 Patrick Mcqueary
 Mary Carol & John Melton
 Ann Meranus
 Linda & Jim Miller
 Gerald Miller & Jim Pater
 Janet Montgomery & Elaine
 Suess
 Daniel Montgomery
 Thais Morata
 Robert Moreland
 Victoria Morgan
 Marjorie Motch
 Fred Murrell
 Tiffany Neri
 Silvania & Willie Ng
 Jeffrey Niemes & Craig Cooper

Daniel Nolan
 Phillip Nuxhall
 Kathleen O'Brien
 Kristine S. O'Brien
 Pat O'Connor
 Brett Offenberger & Doug
 Duckett
 Randall & Marianne Olson
 Whitney O'Neal
 Don Pamperin
 Matt Pappert & Steve Taylor
 Reverend Giles H. Pater
 Nancy S. Petrosky
 Philippus United Church of Christ
 Penny Poirier & Tim Smith
 William Porter & J. David Simon
 Bruce Preston
 John Purk
 Margaret Quinn
 Brian Reynolds & Justin Duncan
 Richard Consulting Corporation
 Melody Sawyer Richardson
 Edwin & Carole Rigaud
 Joe Rigotti
 Adam Roberts
 B. Keith Roberts
 Brent Rose
 Mary Bob & Jack Rubenstein
 Phil Rundle
 William F. Russo
 Rina Saperstein & Jeffrey Davis
 George Sarofeen & David
 Ferguson
 Lauren Schaeper
 Jeff Schlabach
 Sarah Ball Schloss & James
 Schloss
 Rebecca Seeman & David Wood
 Herb Seidner
 Julie Shaffer-Boggano
 Christopher & Jeanne Sheldon
 Faisal Shukairy
 Paul & Betsy Sittenfeld
 Tracey & Brian Skale
 Carl & Lizi Solway
 Sandra C. Driggins-Smith
 John Sper
 Kayla J. Springer
 Jay Springer
 St. John's Westminster Union
 Church
 Howard & Nancy Starnbach
 Carol Steger
 Jim & Kathleen Stengel
 Mary S. Stern
 W. Gene Story
 Laura Sullivan
 Scott Swan
 Barbara Syphax
 T.G.I. Friday's Restaurants
 Watts Taylor
 Ten Thousand Villages
 Jeanette Tepe
 Renate & Anthony Thomas
 Marvin Tibbetts
 Nina & Howard Tolley
 Tom & Torey Torre
 Edward Tower & Tom Beckman
 Karen Tully
 Frances B. Turner
 Phil Tworek & Tom Umfrid
 Michael Uhlenhake
 Randy James Ulse
 Donald Vannatta & William
 Creasey
 James M. Wagner
 Priscilla Walford
 Kathleen & Peter Walzer
 Theodore Wanstrath
 Michelle Watts
 Anthony & Sophie Wean
 Phillip Weintraub & Bruce Lazarus
 Ceilia White

Deborah Williams
 Brandon Willoughby & Josh McGimsey
 Judith Wills
 Russell Winters
 Rabbi Irvin & Kathy Wise
 Shelby O. Wood
 Emily Woodruff
 David R. Woodside
 Janice E. Yates
 Carolyn & A.J. Yorio
 Megan Zarnitz

Supporter (\$50-\$99)

Anonymous Friends
 George W. Alexander, Jr.
 Romola Allen
 AmazonSmile
 Jane Anderson
 Carol N. Aquino
 Linda D. Arnest
 Lou & Judy Arnette
 Kimberly Austin
 Cindy J. Bachurski
 Linda M. Backscheider

Kathleen Cox
 Lysbeth Curtis
 Caroline Daley
 Majorie Davies
 John & Nanci Davis
 Paul & Linda Davis
 Bob Dearth
 Susan & Paul Diekmeyer
 Kathleen Dignan
 Mike Dunn
 Cheryl J. Eagleson
 Max Edelman
 Lori Elliott & Lori Anthony
 Merry Ewing
 Barbara A. Feldmann
 Rebecca Ferguson
 Terry Ferris & Larry McPheeters
 Carl J. Fichtenbaum & Mary Beth Donica
 Nancy Finch
 Margie Finley
 Susan & Charles Fisher
 Heric Flores
 Simon & Patricia Foster
 Joyce V. Frame
 Penny Freppon
 Virginia Gandy & Pam Jacobson
 Jeff & Sarah Gardocki
 Gary L. Gilmer

Patricia Gleason
 Mona & George Glover
 Meghan Glynn
 Faith & Sylvan Golder
 Jeanne Gollither
 Carol Goodman
 Gary Goodman & Karl Rece
 Walter & Paula Green
 Megan Green
 Christina Green
 Marilyn Groneck
 Jack Gross
 John Guagenti
 Guy & Kara Guckenberger
 Ben A. Hannah
 Marcellus Harris
 Kate Harrow
 Mary Heider
 Don & Patricia Hinkley
 Helen Hirsch
 Leah B. Hoehstetter & Ray Owens
 Edita Hoffman
 Fred & Ruth Holt
 Robert Howell
 Nancy Huck
 Jenny Hudson
 Jurena K. Jackson
 Murray Jaffe
 Maribeth Jalovec
 Robert Jenkins
 Debra Johnsen
 Mary Beth Johnson & Steven Matijcio
 Sheila Johnson
 Kimberly Johnson
 Thomas Jones
 Quennie & Andre Jones
 Daniel Kasprovicz
 Diane & Richard Katz
 Alison Keller
 Dave Kempton & Tom Wessler
 Steve & Kimberly King
 Kurt Kishler
 Jerome Kramer
 Linda & Joseph Kroner
 Rochell Kuhlman
 Regina Kuhns & Ron Pinkerton
 Mary Kulakoski-Hoerr
 David Kundrat

Kevan & Judy Langner
 Richard & Susan Lauf
 Daniel Leesman
 Bradley & Renee Lemberg
 Linda S. Leslie
 Barbara & William Lewis
 Andrea E. Lippelman
 Marian Lyles
 Scott MacEachen
 Michael J. Madigan
 Randy & Melissa Manning
 Terrence Mason
 Mark McComas
 Jacquelyn McCray
 David McGhee
 Colleen & Karen McLaughlin
 Daniel R. Mess
 Mitchell & Jackie Meyers
 David Mill
 Deborah Miller
 Carole Miller
 Philip Moeller
 Robert Moore & Bavi Rivera
 Toni & Neal Morris
 David & Vicky Motch
 Regine Moulton
 Dale & Mary Pat Mullaney
 Lawrence & Mary Mullaney
 Sarah Murphree
 Jane & Kevin Murphy
 Barbara K. Myers
 Jennifer Ostheimer
 Linda J. Parker & William Kent Koefler
 Danny Parsley
 Tammy Patton
 Bob Pawlowski
 Cassie Peluso
 Susan & Frank Peluso
 Lindsey Petersen
 Jeffrey Petro
 Kathleen & Dan Pfahl
 Nancy & William Phelan
 Lynn Piepmeyer
 Anne Powers
 Marcy Prebeg
 Amy & David Purcell
 Adam Reilly
 Kevin Reynolds
 Brewster Rhoads & Ann Lugbill
 Patricia Richie
 Martin Roberts
 Henrita & John Rosenthal
 Connie Rosselot
 Maria & Eric Rufe
 Robert & Jane Sand
 James Sattler
 Kathy Schellinger
 Mary & Robert Schneider
 Mark Schuller
 Zell Schulman
 Michael A. Settembrini
 Geraldine Sherrer
 Theresa Simos
 Kareem A. Simpson
 Mary Skahan
 Christa Skiles
 Barbara Smith
 Barry & Mary Smyth
 Kathleen & Charles Snodgrass
 Douglas & Kathryn Spak
 Richard P. Spare
 Bridget Sparks
 S. Arthur Spiegel
 St. John's Unitarian Universalist Church
 Evelyn M. Sten
 Tom Stettner, Jr.
 Matthew Stevens
 Robert W. Stewart
 Steve Story
 Maria Sulcer
 Stefanie Sunderland

Brenda & Jim Tarbell
 Jeffrey Taylor
 Frances & Dale Tesmond
 Joanne Thiemann
 Mike Thompson
 Toyota Boshoku America - Erlanger
 United Way of Greater Rochester
 Felicia Walker
 Remi Walz
 John W. Warrington, Jr.
 Tamera Watkins
 Aaron Weiner
 Stanley & Alice Werbrich
 Michael Wheatley
 Melissa Wideman
 Wilson Willard, Jr.
 Patricia Williams
 Mauri Willis
 Reverend Barry Windholtz
 Andrea Wiot
 Nancy & David Wolf
 Anne L. Wright
 Mary Yorio
 Karen Zellner
 Hilla M. Zerbst

Friend (\$1-\$49)

Anonymous Friends
 Christian Ach
 Greg Adams
 Casey Aichholz
 Charles C. Albrecht
 Zach Alessi
 Kendra Allen
 Chaquay Allen
 Verna & Toni Allen
 Dawn Anderson
 James M. Armstrong
 Caitlin Arnest
 Kari Arnold
 Anna Assaley
 Heather Asti
 Trevor Asti
 Ronald Attreau
 Sheeba Ayli
 Amanda Bachman
 Nancy Baker
 Rayman Barrett & Mary Barrett-Beighle
 Valerie Barrett
 Jacky Barrow
 Kent Beausoleil
 Ruth Beiting
 Matt Bergantino
 Kelly Berleman
 Diane Berry
 Keri Bickel
 Lois & Robert Bigley
 Reuben Blair
 Natalie Blake
 Beverly Blalock
 Gina Bonar
 Judi Borne
 Cynthia H. Bourgeois
 Mary & Robert Bowling
 Barbara Boylan
 Carole Boyle
 Denise Bragg
 Forrest Brandt & Kathy Wade
 Veena Brannon
 Melinda J. Brauning
 Theresa Brenner
 Lacey Brewster
 Dennis Bridges
 Mary Briggs
 Cheyenne Brown
 Patrick Brown
 Emily Brown
 Reverend Monica Brown
 Maxini Brown Reed
 Jeff Bucald

"The Imperial Sovereign Queen City Court of the Buckeye Empire (I.S.Q.C.C.B.E.) has partnered with our community to make sure our community is taken care of physically, emotionally and financially. Caracole took on a huge task of making sure those who are infected and affected by HIV/AIDS had the services they needed when another local agency closed its doors. The hard work and dedication of the staff and volunteers and the strong leadership are what makes this organization a success."

-Michael Cotrell, aka Brooklyn Steele-Tate, Vice President I.S.Q.C.C.B.E.

Robert & Marilyn Barnett
 Eric Barth & Danielle Gentry-Barth
 Donna Becker
 Jim Bender
 Todd Bezold
 Michael Boberg & Ronny Wilson
 Julie Bockenstette
 Susan Bolton
 Barbara Bond
 Matthew & Susan Brammer
 Cherie & Jay Brandt
 Joseph A. Brant
 Marianne & Ed Brill
 John P. Bruggen
 Patricia Buschmann
 Sara Cagle
 Carolyn Caldwell
 Ann M. Chisko
 Ron Clemons
 Phillip Click
 Mitchell & Morissa Cohen
 Adam Condra
 Karen Congdon
 Shirley Conrad
 Martha & Paul Conway
 Julie & Brady Coogan
 Randy Cook
 Jane Cook
 Shelly Cooke & Renia Messer
 Valerie Costello

Wayne Buckhout
 Cynthia Burgess
 Daniel Burns & Allison Layton
 Amanda Burns
 Jason Butler
 Karen Butscha
 Jon Calderas
 Miro Calderas
 Beckie Campbell
 Shawn & Nathan Campbell
 Laurie Camwiti
 Sandy Cappel
 Laurie Carto
 Jim Chandler
 Janae Chaney
 Rick Character
 Daphne Chek
 Erica & Jared Cherup
 Randy Clark
 Louis & Kathy Claybon
 Joseph Clemans
 Anthony Cole
 Matthew Collins
 Phyllis Jeffers-Coly
 Susan Cook
 Rhonda Cooper
 Cameron Cox
 Lucy Crane
 Tom Crawford
 Alice Crawford
 Melanie Crihfield

Eugene Flege
 Brynn Fossett
 Rob Franek
 Caryn Franklin
 Casey Frazee
 Joy Frederick
 Thomas Freeman & Doug Klocke
 Clayton Freeman
 Cecilia Freihofer
 Gregrick Frey
 Candyce Fujita
 Virgil Gaines
 Rebekah Garrett
 Alex Gehler
 Genesis Strategies LLC
 Lakeisha Gibbs
 Amy Givens
 Deborah & Ron Gladden
 Rob Goeller
 Ryan Goellner & Matthew
 Williams
 Gary & Pamela Goetz
 Richard Gory
 Mikki & Daniel Graff
 Roger Greiner & Cheryl Damon
 Greiner
 Gene Griffith
 Margaret & James Grimme
 Thomas Grogan
 Joseph & Joan Groncek
 William Groncek
 Darlene Grubb
 Domenic Guezzo
 Jeffrey Haas

Mary Ann Keating
 James & Andrea Keating
 Robert Keck
 Alexandra Kesman
 Liz Keuffer
 Deborah King
 Amy Knipp
 Linda Kocis
 Jane Kolkmeier
 Eric Kraft
 Jean Kresge
 Steve Krieger
 Dustin Krotchen
 Samantha Kuchera
 Tanya LaTour
 Tom Lawler
 Kendra Leahy
 Libby Lee
 Jason & Jeannie Leo
 Phyllis Brown Lerner
 Joanna Lounsbury
 Frances & Ralph Lowenstein
 Tonia Lower
 Marcia & Robert Lukin
 Helene & Millard Mack
 Druquilla Maines
 John Mann
 Jamie Markle
 Tommy Martin
 Norma J. Mason
 Brian & Janice McConville
 Teddy McCreddie
 Jennifer McEvilley
 Kathleen & John McGee
 Florence McGraw
 Reverend James Meade
 Tracey Meade
 Suzanne Mehl
 Jeanette Merz
 Helen Meyer
 Mark Miller
 Abigail Miller
 Erica Minton
 Jody Moran
 Ryan Moreland
 Sharon Morris
 Elizabeth & Edward Mount
 Heather Mousie
 Sophia Mousie
 Matthew Murray
 Kyle Murway
 H.C. Buck & Patricia Niehoff
 Linda Niesen
 Tiana Nixon
 Mike Nordlund
 Jennifer O'Donnell & Patrick
 McDevitt
 Alana O'Koon
 Edgar Ramos-Ortiz
 Todd Osborne
 Kevin Ottke
 Eric Otto
 Perry Owen
 Evella Owens
 Mary Palmer
 Pangaea Trading Company
 Jill Parsons
 Raymond Pater
 H. David & Peggi Patrick
 Paul Peabody
 Kimberly Penzes
 Nancy Phillips
 Joy Pierson
 Robert G. Platt, Jr.
 Alison Price
 Michael Privitera & Marcia Kaplan
 Nicholas Puncer
 Jared Queen
 Queen City Cookies
 Barbara Rabkin
 Priya Ramanujam
 Jacob Rebholz
 Dan Reid

Dave Rickerd
 Thomas Ridgeway & Lawrence
 Johnson
 Deborah S. Rieselman
 Timothy Rinehart & Kevin Conner
 Robert Roesbery
 Alynn Rousselle
 Andrew Ruffner & David Weaver
 George Sackleh
 Edward & Karen Saeks
 George Sanders
 Daniel Scheiman
 Jason Schenck
 Lisa Schnedl
 Mark Schnidler
 Anna Schultz
 Hannah Schultz
 Kristin Schwandner
 Julie L. Schwaneckamp
 Eric Schwietering
 Cindi Scibelli
 Shannon See & Amy Mobley
 Lori Senger
 Michelle Serr
 Daniel Shiveley
 Nick Siciliano
 Ethan Sizemore
 Cranston Skelton
 Rebecca Sloan
 Erin Smiley
 Susan & David Lee Smith
 Lawrence Smith
 James Smith
 Jeni Sommer
 James Stallworth
 Mike Stenger & Kim Skorogod
 Katie Stephens
 Elizabeth B. Stewart
 Yvonne Stewart
 Debbie Stratis
 Jim Stratton
 Victoria Straughn
 Becky Stringer
 Judith A. Sturgill
 Al Sulcer
 Lisa Sullivan
 Jeffrey Sunberg
 Taryn Surtees
 Tarynleigh Surtees
 Terry & Stuart Susskind
 David Sutherland
 Lisa Swafford
 Seth Sweatt
 Darla Sweet
 Sue Swonger
 Keith E. Syler
 Matt Taliaferro
 Patricia A. Tanner
 Robert Tate
 Robert P. Temmen
 David & Alicia Temmesfeld
 Anne Tepe
 Brian L. Tiffany
 Kristen Tilley
 William Trees
 Judith Turner
 Mary Uhrig
 United Way of Metropolitan
 Chicago
 Michael Vail
 Jennifer Vanlandingham
 Joshua Vanzant
 Alice Vockell
 Arissa Volk
 Linda Vordenberge
 Helen Waits
 Jacqueline Wallace
 Steve Warkany & H. L. Woodward
 Vivian Watkins
 Marian Weage
 Rachel Weatherby
 Paul & Rose Weber
 Gordon & Louise Weil

"Caracole has
 been innovative in
 addressing complicated
 public health issues in our
 neighborhood. When problems
 seemed intractable, Caracole
 brought data, experience and
 compassion to help us under-
 stand our options, and start
 to make some progress."

-Oliver Kroner, President,
 Northside Community Council

Martie Croswait
 Shirley Cunigan
 Rick Curnutte
 Mike Cutting
 Paul Damon
 Lori Daniels
 Patty Davis
 Daniel Delacevoh
 Daniel Delacey
 Kathy & Robert Deubell
 Amy Dill
 Andy Dischar
 Jacob Drabik
 Matt Dunn
 Karissa Dynes
 Loretta Ebnert
 Tina Ellis
 Mandy England
 Jeff Engle
 Margaret Espelage
 Cherrisse Estes
 Mary Milton Fanthorp
 Kevin Feldman
 Micki Ferando
 Matthew Ferguson
 Molly Flanagan

Spencer Hale
 Yolanda Hall
 Ben Halpin
 Denise Harrman
 Jane Vernon Harter
 Stacey Hartman
 Marcia Hartsock
 Katie Hatfield
 Phyllis Hayden
 Toby L. Hazen
 Mary Carolyn Healey
 Evan Hennessy
 Lynn M. Herman &
 Connie Frick
 Kellen Hicks
 Marvin & Kristina Hicks
 Kris Hicks
 Julie Hill
 Rosemary Hill
 Larry Hill
 Kelly Hiltibrand
 Jake Hitch
 Beverly Hittle
 Greg Hladky
 Joe Hoffecker
 Daniel Hoffheimer
 Kerry Homan
 Curtis Hopson
 Grace Howard
 Heath Howe
 Marty Howgate
 Sara Hughes
 Rose Hunter
 Christy Jackson
 Jamie Jackson
 Judy Jacobs
 Lynn Jacobs
 Bre Jeffery
 Alexandra Jennings
 Laura Johnson
 Loda Johnson
 Dana Johnson
 Jeffrey Johnson
 Carol Joiner
 Jeffrey Jones
 Karen Jones
 Charles W. Jordan
 Ted Kaufflin
 Michele Kay

Richard Weiland
 Brian Weinel
 Terry Wellman
 William Wells
 Brad Wenstrup
 Yolanda Y. Wess
 Larry Whitakey
 David White
 Mariah White
 Melissa Widerman
 Blossom & Chris Widmer
 Thomas J. Wiethorn
 Gwen Wilder
 Mary Jo Will
 Lawrence & Deborah Williams
 Amanda Willoughby
 Barbara Wilson
 Kathleen Wirsch
 Taylor Wirsch
 Steve Wolsefer
 Kate York
 Ashley Young
 Christa Zielke

In-Kind Contributions

Gold Living Circle (\$5,000+)
 Enriching Spaces/ISI
 Macy's
 Jeff Thomas Catering

Silver Living Circle (\$2,500-\$4,999)
 Carol & Victor Dipilla
 Galerie
 Ryan Messer & James Musuraca-Messer

Bronze Living Circle (\$1,000-\$2,499)
 A Day to Remember USA
 Barry Brinker
 Cincinnati Arts Association
 Kathy Comisar & Larry Flemer
 Convivial Media Group
 Graff Designs
 Jolie Harris & Steve Russell
 I.S.Q.C.C.B.E.
 Rick Kay & Jim Kelly
 Gina Kern
 The Kroger Company
 Thomas Levack & Sarah Jane Bellamy
 NATI Social
 Spring Grove Cemetery
 St. Columban Church

Benefactor (\$500-\$999)
 Able Projects
 Balloons & Beyond
 Brian Cason
 Citi Florence
 Mary Ellen & Tom Cody
 DJ Julie Boogie
 Freeman Durham & Dean Clevenger
 Suzanne Fisher
 Jeff Hopkins
 John Keller
 Andrea M. Lukesh & Nancy Dolin
 Liam O'Connell
 Phototainment Fun LLC
 Richard D. Robertson, Jr. & James Conway, Jr.
 Scorpius of Cincinnati
 St. Andrew's Episcopal Church
 Starbucks
 William D. Stenger
 Taste of Belgium
 Veterinary Program at UC
 Blue Ash
 Susan & Colin Vogt

Friend (\$1-\$499)
 Anonymous Friends
 21c Museum Hotel
 Jane Anderson
 Arlene Aranzamendez
 Mary Lou Arundell
 Anne & Brian Balsley
 Below Zero Lounge
 Best Friends Pet Care
 Blue Jay Restaurant
 Robert Blum
 Albert A. Bocklet
 Steve Bolia
 Bud Herbert Motors
 C&D Bar
 Thomas Caito
 Chuck At The Regency
 Cincinnati Men's Chorus
 Cincinnati Opera
 Cincinnati Symphony Orchestra
 Jim & Connie Clevenger
 Collective Bias
 Michael Cotrell
 Kathleen Cox
 Carol Cox
 Crossroads Hospice
 Sherri Crowley
 Walt & Natalia Darling
 Kathy Davis
 Denise Deitemeyer
 Downtown Cincinnati Inc.
 Paul Dunlavy & Roger Hutton
 Cheryl J. Eagleson
 Embers Restaurant
 Mark Essex
 Doug Evans
 Everybody Rides Metro Foundation
 Fedders Feed & Seed
 Judith Feinberg
 Ron & D.C. Bails-Forbes
 Thomas Freeman & Doug Klocke
 Future Life Now LLC
 Walter & Paula Green
 Paul Gronneck & Steve Hebling
 John Guagenti
 Kelli Halter & Mark Masters
 Happy Chicks Bakery
 Jon Hargett & William Carson
 Kate Harrow
 Dennis & Shirley Hartke
 Lynn M. Herman & Connie Frick
 Nicole & Andrew Higley
 Midge & John Hines
 Murray Jaffe
 Kay A. Johnson & Greg Rouan
 Robert A. Jones
 Lois & Dick Kay
 Liz Keuffer
 KI Cares
 Scott Knox & Ray Pater
 Lakeview United Church of Christ
 Joe LeGr& & Robert Jenkins
 Lee Luipold
 Main Bite
 Tina Manning
 Dianne & Peter Marcus
 Dennis McCann
 Joshua McShane
 Meijer
 Ochiki Brown-Moore
 Lilamae Mueller
 Natorp's Garden Stores
 Richard & Janet Neidhard
 Dan Newman
 Nielsen Co.
 Nike Factory Store
 Jennifer O'Donnell & Patrick McDevitt
 Joseph O'Flynn
 Ohio AIDS Coalition
 Jennifer Ostheimer

Mark Palkovic & Thomas Shessler
 Amy Paolo
 Patty's Old Fashioned Popcorn
 Pet Supplies Plus
 Stephen Peterson & Christopher Bolling
 Penny Poirier & Tim Smith
 Diane Powers
 Margaret Quinn
 Jerry Ralenkotter
 Rodney Richer & Brian Reedy
 Ruth Richardson
 Thomas Ridgeway & Lawrence Johnson
 RJ Fitness
 Road ID
 Rumpke
 Salon Beck
 George Sarofeen & David Ferguson
 Mary & Robert Schneider
 Sharon Cook Gallery
 Sigma Gamma Rho Sorority Inc. SONS
 Mike Story & Heidi Kloos
 Student Nurse Association
 Jeanette Tepe
 Joanne Thiemann
 Timothy's Florals
 Jan & Mark Toraaason
 Terry C. Tracy
 Treasures 4 Charity Inc.
 Tri State Leather
 Trio Restaurant
 Joan Turner
 Brandy Vitucci
 Nicole & Robert Welch
 Carolyn Wetzell
 David White
 Donald & Bonnie White
 Tedd & Paulette Wittenbrink
 Maureen Wood
 WVXU
 Jonah Yokoyama & Julie Ulurich

Gifts were made in honor of the following:

Jesse Albertson
 Ron Beck
 Daniel Braunm
 John E. Cairns
 Caracole Staff
 Bill Chappie and Scott Allgyer
 Dean Clevenger
 Jamie Cornish
 Wesley Duncan
 Freeman Durham
 Michael Edwards
 Jerry Ewers
 Peter Frame
 Richard Goodman
 Sean Guilfoile
 Brent Hartke
 Rick Kay
 Brandon and Claire Mello
 Christopher Oligee
 Kevin Oligee
 Michael Oligee
 Rick Oliver and Michael Kelley
 Ron Padgett
 Stephen Peterson
 Ruth Richardson
 Richard D. Robertson, Jr. and James Conway, Jr.
 Moe Rouse
 Taste of Belgium
 Rex Van Alstine

Gifts were made in memory of the following:

Edward G. and Ned Austin
 Geniah Brown
 Bo England
 Roxie Graham
 Mark Gronneck
 Dorothy Kelly
 Emily Allen Laffoon
 Lori Wacksman Martin
 Terry Nolan
 Douglas Oligee
 Pete Seeger
 James Shaw
 David Wood

In-Kind Donations

Items distributed to Caracole clients in 2014

Toilet Paper.....	3,554
Paper Towels.....	249
Toothpaste.....	777
Shampoo.....	1,376
Floss.....	152
Mouthwash.....	89
Body Wash.....	2,128
Conditioner.....	496
Razors.....	700
Shaving Cream.....	221
Deodorant.....	360
Facial Tissue.....	1,380
Lotion.....	660
Detergent.....	101
Laundry.....	1,048
Sheet Sets.....	22
Blankets.....	34
Feminine Care Products.....	447
Cleaning Supplies.....	242
Gift Cards.....	\$2,450
Misc. Items*.....	8,378

*Items such as: calendars, hand bags, canned food, clothing, make up, mattress covers, rugs, pillows, heaters, fans, furniture, kitchen items, pet food and event tickets.

Thank you!



4138 Hamilton Ave.
Cincinnati, OH 45223
Phone: 513.761.1480
www.caracole.org

Non-Profit
U.S. Postage
PAID
Cincinnati, OH
Permit No. 4959

Caracole hosts many events throughout the year. *Please join us!*

Dining Out For Life®

Tuesday, February 3, 2015
Participating Restaurants

Miss Northside Drag Pageant

Sunday, March 29, 2015
Northside Tavern

Caracole's 5K for AIDS

Sunday, April 19, 2015
Spring Grove Cemetery

Annual Meeting

Tuesday, April 28, 2015
Fifth Third Convening Center
at United Way of Greater Cincinnati

Cincinnati Pride Parade and Festival

Saturday, June 27, 2015
Downtown Cincinnati

Northside Fourth of July Parade

Saturday, July 4, 2015
Northside

Party in Plaid and Paisley

Saturday, August 15, 2015
Cincinnati Masonic Center

Christmas Tree Sale

Weekends, Thanksgiving to Christmas
Findlay Market

World AIDS Day

Tuesday, December 1, 2015

For more information about upcoming events, visit
www.caracole.org or www.facebook.com/caracolecincinnati

FUNDED BY
city of
CINCINNATI



"A strong United Way Agency Partner, Caracole has continued to grow and have a broader impact in our region. The agency provides excellent services for individuals and families living with HIV/AIDS and has shown leadership and assistance to other organizations serving this population. Finally, Caracole has grown its capacity in innovative measurement, which has led to outcomes measurement, which has led to look forward to continuing to partner with Caracole to build stronger and healthier communities for all."

-The Rob Reifsnnyder, President,
United Way of Greater Cincinnati